



**OPTIGUARD®**  
Product catalogue

**One of the biggest challenges in arranging a retail display is an aesthetically pleasing and clean demonstration of various products. OPTIGUARD® solutions, apart from displaying and securing your products, also provide a simple to use system with additional functions assisting store managers and personnel in their daily tasks.**

An eye-catching design is a key part of the development of our new products. The design has been recognized by the Institute of Industrial Design - products: Elypse Base and StandAlone has been one of the finalists for the Good Design 2014 Award

The main purpose of the OPTIGUARD® system, besides theft protection is to present the products and highlight their best features. We take great care to deliver new solutions and accessories to satisfy even the most demanding clients.



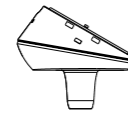
**StandAlone.** Standalone anti-theft protection for individual display stands and islands. Built-in battery for use in outdoor events. Quick and easy installation - no display unit modifications or special tools required. Automatically activated sensor.

**StandAlone** is also part of a general store décor - built-in backlight highlights the product and indicates the protection status. Our design has been recognized by the Institute of Industrial Design as one of the finalists for the Good Design 2014 Award.

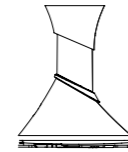


**StandAlone.** built-in anti-tamper device - any theft attempt will activate the alarm.

Retail display components:



**UMH3 Sensor**  
**Applications:** smartphones, tablets, GPS navigation  
**Alarm:** built-in LED indicating protection status  
**Features:** product charging function, additional product protection (UMS), SMART function - additional anti-theft protection: audible and visual alarm when charging cable disconnected  
**Compatibility:** Elypse Base, OptiStand, StandAlone bases  
**Accessories:** OptiGrippers, OptiBrackets FIT  
**Colours:** black, white  
**Software:** secuMedia™, secuMedia™.net, Observer



**StandAlone**  
**Alarm:** built-in backlit ring indicates protection status audible alarm  
**Compatibility:** UMH4, UMH3, DFO2, DFO2 Mobile sensors  
**Installation:** 1. With OPTIGUARD® adhesive pads (no display unit modifications)  
 2. With screws (pre-drilled holes) - Fig. 1  
**Highlight colour:** white, blue, green, red, pink, yellow or orange  
**Colours:** black, white  
**Software:** secuMedia™, secuMedia™.net

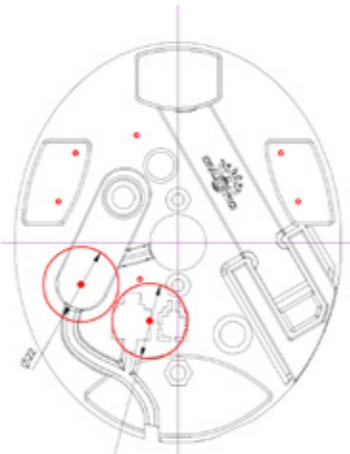


fig.1 drilling template OptiStand / StandAlone



**Micro USB cable**

Cable for testing displayed product functions. Angle design for tidy cable arrangement without diverting attention from the displayed product. SMART function for additional anti-theft protection - disconnected cable activates audible and visual alarm. With built-in LED indicating protection status.

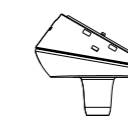


**OptiGrippers.** Grips for improved product stability and secure product testing. Additional anti-theft protection.



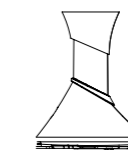
**OptiStand.** Elypse Line display is available in different colours. Optimum use of a display unit with adjustable height stands. Perfect solution for protecting a large number of devices.

Retail display components:



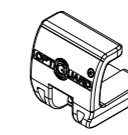
**UMH3 Sensor**

**Applications:** smartphones, tablets, GPS navigations  
**Alarm:** built-in LED indicating protection status  
**Features:** product charging function, additional product protection (UMS), SMART function – additional anti-theft protection: audible and visual alarm when charging cable disconnected  
**Compatibility:** Elypse Base, OptiStand, StandAlone bases  
**Accessories:** OptiGrippers, OptiBrackets FIT  
**Colours:** black, white  
**Software:** secuMedia™, secuMedia™.net, Observer



**OptiStand**

**Alarm:** built-in backlit ring indicates protection status  
**Compatibility:** UMH4, UMH3, DFO2, DFO2 Mobile sensors  
**Installation:** 1. With OPTIGUARD® adhesive pads (no display unit modifications)  
 2. With screws (pre-drilled holes) - Fig. 1, page 4  
**Highlight colour:** white, blue, green, red, pink, yellow or orange  
**Colours:** black, white  
**Software:** secuMedia™, secuMedia™.net, Observer



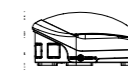
**OptiGrippers**

**Applications:** smartphones, tablets  
**Features:** multi-purpose fixed with zip ties  
**Compatibility:** UMH3, UMH4 sensor  
**Colours:** transparent  
**Packaging:** 10 pcs. (secures up to 5 products)



**Alarm unit**

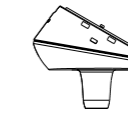
More information, see p. 22



**Elypse Signaller**

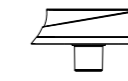
More information, see p. 10

Retail display components:



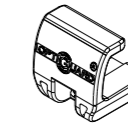
**UMH3 Sensor**

**Applications:** smartphones, tablets, GPS navigations  
**Alarm:** built-in LED indicating protection status  
**Features:** product charging function, additional product protection (UMS), SMART function – additional anti-theft protection: audible and visual alarm when charging cable disconnected  
**Compatibility:** Elypse Base, OptiStand, StandAlone bases  
**Accessories:** OptiGrippers, OptiBrackets FIT  
**Colours:** black, white  
**Software:** secuMedia™, secuMedia™.net, Observer



**Elypse Base**

**Alarm:** built-in backlit ring indicates protection status  
**Compatibility:** UMH4, UMH3, DFO2, DFO2 Mobile sensors  
**Installation:** 1. With OPTIGUARD® adhesive pads (no display unit modifications)  
 2. With screws (pre-drilled holes) - Fig. 2  
**Highlight colour:** white, blue, green, red, pink, yellow or orange  
**Colours:** black, white  
**Software:** secuMedia™, secuMedia™.net, Observer



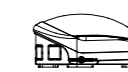
**OptiGrippers**

**Applications:** smartphones, tablets  
**Features:** multi-purpose fixed with zip ties  
**Compatibility:** UMH3, UMH4 sensor  
**Colours:** transparent  
**Packaging:** 10 pcs. (secures up to 5 products)



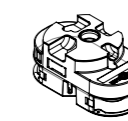
**Alarm unit**

More information, see p. 22



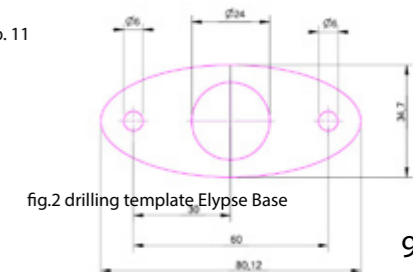
**Elypse Signaller**

More information, see p. 10



**Recoiler 6.0**

More information, see p. 11



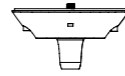
**UMH3.** Sensor displaying a secured product at an optimum 30 degrees angle. Guarantees aesthetic arrangement with built-in magnets for perfect product positioning.

**Elypse Base.** Elypse Base is available in two colours. Our design has been recognized by the Institute of Industrial Design as one of the finalists for the Good Design 2014 Award.

**OptiGrippers.** General purpose and easy installation with standard zip ties.

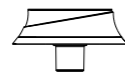


Retail display components:



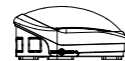
**DFO2 Mobile Sensor**

**Applications:** smartphones, tablets  
**Alarm:** built-in LED indicating protection status  
**Features:** product charging function, additional product protection (UMS), SMART function – additional anti-theft protection: audible and visual alarm when charging cable disconnected  
**Compatibility:** Elypse Base, OptiStand, StandAlone bases  
**Colours:** black, white  
**Software:** secuMedia™, secuMedia™.net, Observer



**Elypse Base**

**Alarm:** built-in backlit ring indicates protection status  
**Compatibility:** UMH4, UMH3, DFO2, DFO2 Mobile sensors  
**Installation:** 1. With OPTIGUARD® adhesive pads (no display unit modifications)  
 2. With screws (pre-drilled holes) - Fig. 2  
**Highlight colour:** white, blue, green, red, pink, yellow or orange  
**Colours:** black, white  
**Software:** secuMedia™, secuMedia™.net, Observer



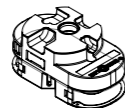
**Elypse Signaller**

Convenient anti-theft system management allowing to conceal the anti-theft system within a display unit without limiting its functionality.  
**Alarm:** audible and visual  
**Features:** indicates number of active ports, indicates port number that tripped the alarm built-in dual anti-tamper device  
**Compatibility:** OPTIGUARD® Alarm units  
**Installation:** 1. With OPTIGUARD® adhesive pads (no display unit modifications)  
 2. With screws (pre-drilled holes) - Fig. 2  
**Colours:** white, red, blue



**Alarm unit**

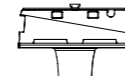
More information, see p. 22



**Recoiler 6.0**

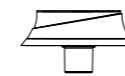
More information, see p. 11

Retail display components:



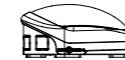
**UMH4 Sensor**

**Applications:** smartphones, tablets, GPS navigations and compact cameras  
**Alarm:** built-in backlight indicates protection status  
**Features:** product charging function, additional product case protection (UMS), SMART function – additional anti-theft protection: audible and visual alarm when charging cable disconnected  
**Compatibility:** Elypse Base, OptiStand, StandAlone bases  
**Highlight colour:** white, blue, green, red, pink, yellow or orange  
**Colours:** black, white  
**Software:** secuMedia™, secuMedia™.net, Observer



**Elypse Base**

**Alarm:** built-in backlit ring indicates protection status  
**Compatibility:** UMH4, UMH3, DFO2, DFO2 Mobile sensors  
**Installation:** 1. With OPTIGUARD® adhesive pads (no display unit modifications)  
 2. With screws (pre-drilled holes) - Fig. 2  
**Highlight colour:** white, blue, green, red, pink, yellow or orange  
**Colours:** black, white  
**Software:** secuMedia™, secuMedia™.net, Observer



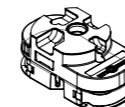
**Elypse Signaller**

More information, see p. 10



**Alarm unit**

More information, see p. 22



**Recoiler 6.0**

Mechanical cable recoiler for aesthetic product presentation. Features a very long cable, while maintaining smooth operation, making the Recoiler 6.0 a perfect solution for low display units.  
**Features:** sensor replacement by store personnel  
**Compatibility:** OPTIGUARD® Alarm units  
**Installation:** 1. With OPTIGUARD® adhesive pads  
 2. With screws (pre-drilled holes)  
 3. With magnets  
**Colours:** white



**Elypse Base.**  
 Guarantees aesthetic arrangement with built-in magnets for perfect product positioning.



**DFO2 Mobile.**  
 Sensor for larger portable electronic devices. Automatically activated sensor. IQ charging function for secure product testing.



**UMH4.** Backlit sensor for perfect arrangement and highlighting the displayed products. It also makes the store personnel tasks easier by indicating the protection status.



**UMH2 Base.**  
Guarantees aesthetic arrangement with built-in magnets for perfect product positioning.



**UMH2.** Sensor for small products only. Small size makes it virtually invisible. Automatically activated sensor.

Retail display components:



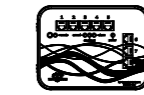
**UMH2 Sensor**  
**Applications:** smartphones, GPS navigations, audio and video players, shavers, epilators and electrical brushes  
**Alarm:** built-in LED indicating protection status  
**Features:** additional product case protection (UMS)  
**Compatibility:** UMH2 Base  
**Colours:** black, white, grey



**UMH2 Base**  
**Compatibility:** UMH2 Sensor  
**Installation:** 1. With OPTIGUARD® adhesive pads (no display unit modifications)  
2. With screws (pre-drilled holes) - Fig. 3  
**Colours:** black, white, grey



**Elypse Signaller**  
More information, see p. 10



**Alarm unit**  
More information, see p. 22

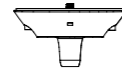


**DFO2.** Horizontal sensor for cameras with large lenses. Automatically activated sensor. Excellent product stability with a fixing screw and an anti-slip adhesive pad.



**OptiStand.** Backlit ring highlights secured product and indicates protection status. Integration with OPTIGUARD® enables aesthetic display without visible cables.

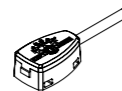
## Retail display components:

**DFO2 Sensor**

**Applications:** SLR cameras, video and photo cameras with tripod mount  
**Alarm:** built-in LED indicating protection status  
**Features:** product power supply, additional lens protection (UMS Velcro),  
**Compatibility:** Elypse Base, OptiStand, StandAlone bases  
**Accessories:** LensGuard, LenSupport  
**Colours:** black, white  
**Software:** secuMedia™, secuMedia™.net, Observer

**OptiStand**

**Alarm:** built-in backlit ring indicates protection status  
**Compatibility:** UMH4, UMH3, DFO2, DFO2 Mobile sensors  
**Installation:** 1. With OPTIGUARD® adhesive pads (no display unit modifications)  
 2. With screws (pre-drilled holes) - Fig. 1, page 4  
**Highlight colour:** white, blue, green, red, pink, yellow or orange  
**Colours:** black, white  
**Software:** secuMedia™, secuMedia™.net, Observer

**UMS Velcro Sensor**

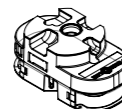
More information, see p. 27

**Elypse Signaller**

More information, see p. 10

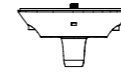
**Alarm unit**

More information, see p. 22

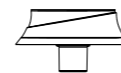
**Recoiler 6.0**

More information, see p. 11

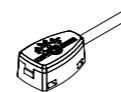
## Retail display components:

**DFO2 Sensor**

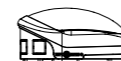
**Applications:** SLR cameras, video and photo cameras with tripod mount  
**Alarm:** built-in LED indicating protection status  
**Features:** product power supply, additional lens protection (UMS Velcro),  
**Compatibility:** Elypse Base, OptiStand, StandAlone bases  
**Accessories:** LensGuard, LenSupport  
**Colours:** black, white  
**Software:** secuMedia™, secuMedia™.net, Observer

**Elypse Base**

**Alarm:** built-in backlit ring indicates protection status  
**Compatibility:** UMH4, UMH3, DFO2, DFO2 Mobile sensors  
**Installation:** 1. With OPTIGUARD® adhesive pads (no display unit modifications)  
 2. With screws (pre-drilled holes) - Fig. 2  
**Highlight colour:** white, blue, green, red, pink, yellow or orange  
**Colours:** black, white  
**Software:** secuMedia™, secuMedia™.net, Observer

**UMS Velcro Sensor**

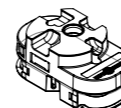
More information, see p. 27

**Elypse Signaller**

More information, see p. 10

**Alarm unit**

More information, see p. 22

**Recoiler 6.0**

More information, see p. 11

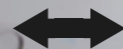


**DFO2.** Compatible with Elypse Line base to arrange any type of retail display. Built-in LED indicating protection status. Power supply for testing secured product functions.





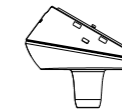
**OptiStand Cameleon.**  
Sposób zmieniania kolorów podświetlenia.



## Cameleon OptiStand

The most advanced OptiStand Cameleon stand version with custom backlight colour settings for special offers.

### Retail display components:



#### UMH3 Sensor

**Applications:** smartphones, tablets, GPS navigations

**Alarm:** built-in LED indicating protection status

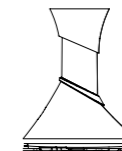
**Features:** product charging function, additional product protection (UMS), SMART function – additional anti-theft protection: audible and visual alarm when charging cable disconnected

**Compatibility:** Elypse Base, OptiStand, StandAlone bases

**Accessories:** OptiGrippers, OptiBrackets FIT

**Colours:** black, white

**Software:** secuMedia™, secuMedia™.net, Observer



#### OptiStand Cameleon

**Alarm:** built-in backlit ring indicates protection status

**Compatibility:** UMH4, UMH3, DFO2, DFO2 Mobile sensors

**Installation:** 1. With OPTIGUARD® adhesive pads (no display unit modifications)

2. With screws (pre-drilled holes) - Fig. 1, page 4

**Highlight colour:** white, blue, green, red, pink, yellow or orange changed anytime

**Colours:** black, white

**Software:** secuMedia™, secuMedia™.net, Observer

High Security Line

02

A series of electronic protection devices reliable mechanical protection, resistant to snatching and cutting. Elypse Line based design allows easy testing of device functions.

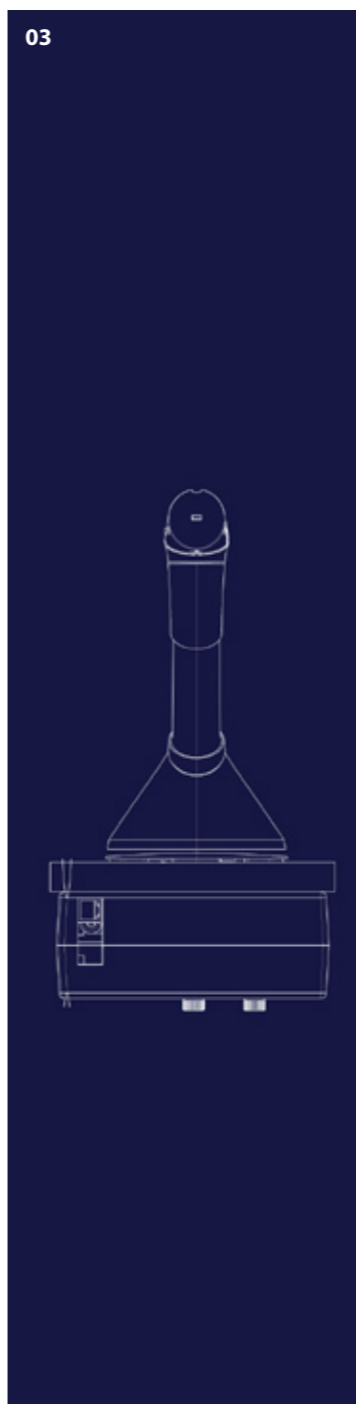
**01. OptiBrackets FIT.** Discreet, high quality finish with brackets adjustable in two planes for any type of smartphone or tablet without obstructing the device screen. Discreet, high quality finish with brackets adjustable in two planes for any type of smartphone or tablet without obstructing the device screen. **02. FIX.** Anti-theft protection with a swivel mount for convenient and attractive display with 0, 180 or 360 degrees lock function. Automatically activated sensor. FIX is part of a general store décor - built-in backlit ring highlights the products and indicates protection status. **03. Recoiler HD.** Mechanical cable recoiler for aesthetic product presentation. Advanced solutions with reinforced line resistant to snatching and cutting.



01



03



Special system for unique products.

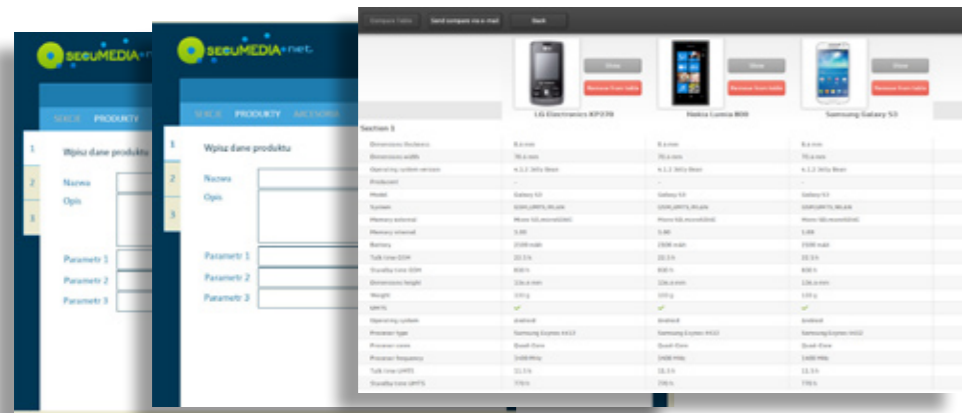




Multimedia Product Comparison Software

- Assists the personnel by providing information on the displayed products
- It makes the purchase decisions easy by comparison of different product features.

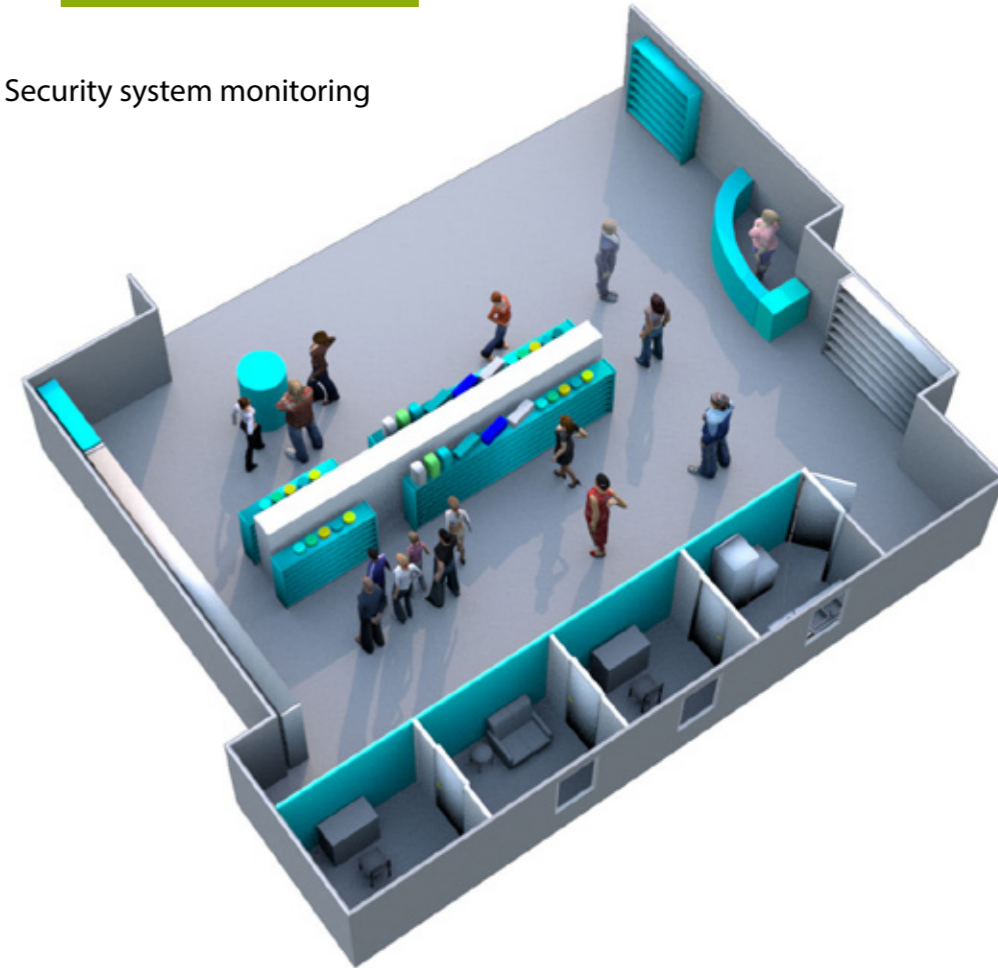
Simple to use system for store assistants, managers and customers. SecuMedia™ demonstrates the products picked up by the Customer on an integrated screen and compares its features with other products of interest to make the purchase decision as easy as possible. It attracts customers with interactive functions and is the latest feature of our retail displays. It is also a knowledge base for the store personnel with constant updates on available products. SecuMedia™ is also an indispensable tool for store managers by providing reports on how many times a specific product is picked up, the most compared products or the most popular location.



Security system monitoring

- It monitors OPTIGUARD® anti-theft system operation.
- Protection against employee theft

Indispensable tool for store personnel and managers. Software for clear and convenient OPTIGUARD® system monitoring. System operation tracking on the store map for quick and easy alarm locating even in large stores. The system gathers information on personnel response time to alarm warnings, number of alarms, theft attempt locations, number of secured products, which is an invaluable information for store managers and protects against employee theft. Reports available in different formats: xls, csv and pdf.



### Alarm Units

The protection status is monitored by an alarm unit, one of the key system components. It enables both product protection and charging for easy testing of product features by the client. Automatic sensor activation. Auxiliary power supply prevents system deactivation at power failure. Built-in audible and visual alarm makes it a perfect solution as standalone anti-theft devices for small stores.

In larger stores, the anti-theft system functions can be complemented by our OPTI-GUARD® Elypse Indicator.

- 01. C16 Alarm unit.**  
Secures up to 16 products
- 02. C8 Alarm unit.**  
Secures up to 8 products
- 3. C4 Alarm unit.**  
Secures up to 4 products



#### MEMORY

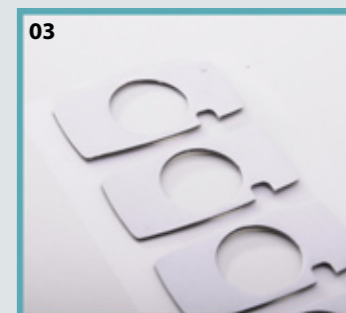
function does not allow personnel to settle into a groove - the alarm cause must be checked each time. The number of secured products before alarm must correspond to the number of products after alarm to guarantee the retail display protection.



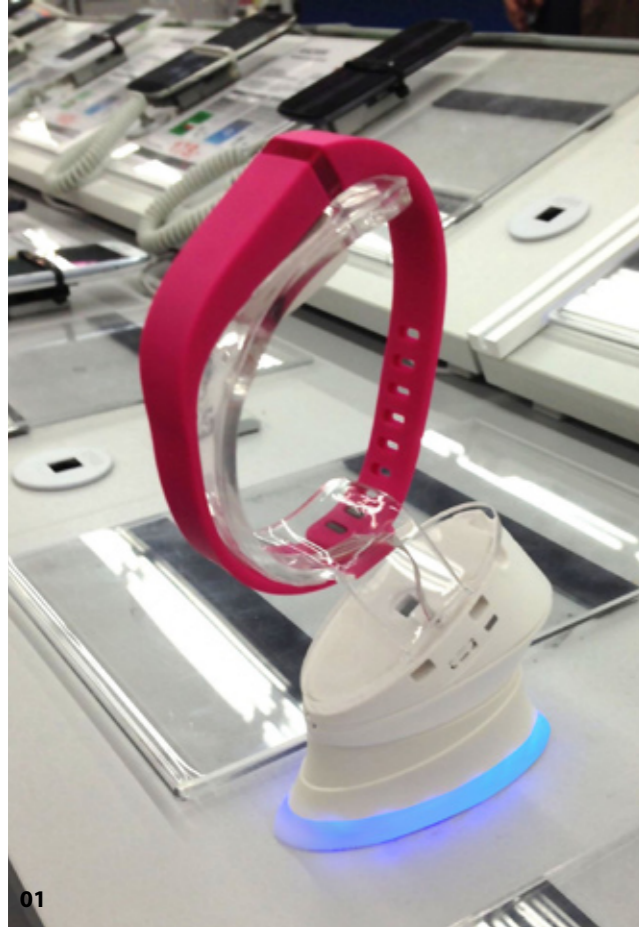
### Tools for personnel

Tool set for easy and convenient OPTI-GUARD® system use and quick and easy replacement of displayed products.

**01. OptiTool 2in1.** A tool for each replacement of displayed products and OptiStand and StandAlone stand disassembly. **02. OptiWhale.** A tool for easy sensor replacement, holding the RJ plug at the base surface. **03. Adhesive pads.** Adhesive pads for reliable product fixing. The adhesive pads are dedicated to specific system components.



## Perfect display



### WatchGuard

Aesthetic anti-theft device for watches. Built-in magnets for easy positioning and aesthetic appearance even for frequently picked up products. Small sensor weight and watch try on function allows easy testing of all product features. SMART function allows additional anti-theft protection - charging cable disconnection is indicated by an audible and visual alarm. The sensor features LED indicating protection status.

### Jack 3,5

Discreet anti-theft sensor connected to the secured products via a headphone socket. Built-in LED indicating protection status.

Applications: car audio, home cinema, Hi-Fi Audio, MP3 and MP4 players, smartphones, tablets and GPS Navigations.

01

02



## Perfect display



01

02



### Price label

One of many accessory improving the retail display aesthetics. Transparent case for use in any configuration with OptiStand and StandAlone stands. Reliable fixing system guarantees tidy appearance even for frequently picked up products.

### Plaque

Aesthetically pleasing retail display is a key factor - an idea to fill in the display while waiting for the product to arrive.

Lens Security

**01. UMS Velcro**  
Improved version of our smallest OPTIGUARD® UMS sensor for camera lenses. Automatically activated sensor. Velcro pad for additional fixing for oval-shaped products. Available as a standalone sensor or additional protection of multi-component products. Built-in LED indicating protection status.

**02. LenSupport**  
Additional mechanical protection for cameras with long and heavy lenses. Transparent material guarantees high aesthetic qualities.

**03. LensGuard**  
Discreet anti-theft protection for camera lenses. Built-in LED indicating protection status.



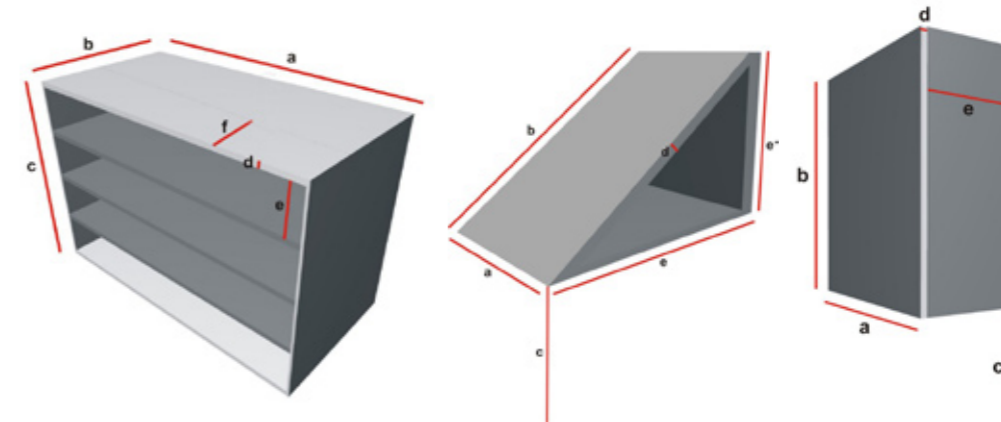
**01. GlassFix**  
Reliable dual-purpose adhesive pad for special purposes. Indispensable for fixing oval-shaped products and sensors to smartphone, tablet and GorillaGlass screens. Verified holding force, adhesion, peeling and temperature resistance.

**02. UMS**  
Our smallest sensor for improved security of small products. Automatically activated sensor. Available as a standalone sensor or additional protection of multi-component products. Guarantees aesthetic arrangement with built-in magnets for perfect product positioning. Built-in LED indicating protection status.

The protection system price depends on many factors. The following questions allow us to assess your needs. Provide answers to all the questions for quick valuation.

1. What type of products are secured?
2. How does the display unit look like? What are its dimensions? What is the countertop made of? Can the furniture countertop be modified?

Furniture photo with specific dimensions



3. How many products are secured?
4. Is mechanical protection required (High Security Line)?
5. Will the products be charged?
6. Will the protection be backlit? What colour?
7. Should all cables be concealed?
8. How often will the displayed products be replaced?
9. Are you interested in software solutions (Observer, secuMedia™.net)?

Contact Sales Department  
[www.optiguard.eu](http://www.optiguard.eu)





